

FALL/WINTER 2012



anna **h**  **vet**

Comfort + Convertibility + *Style*

# GRACE



*Draped  
back with  
twill tape  
drawstring*



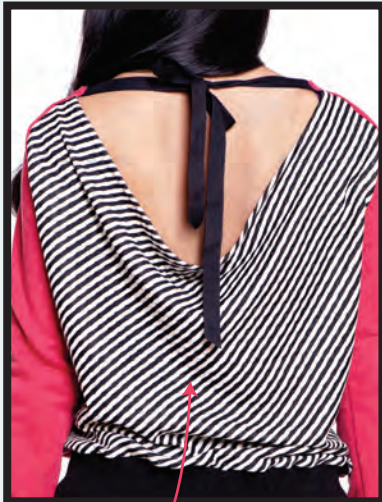
*Underlaying applique  
with hand cut  
detailing*



# Reversible BETINA



*Back detail  
makes  
wearer look  
really cool*



*Draped back  
with twill tape tie*



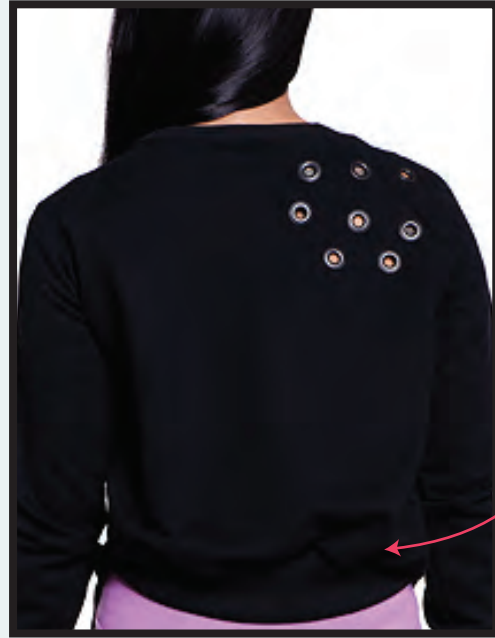
*REVERSIBLE  
to alternate color and polka dots*



# MORGAN



*Extra Long Sleeves*



*Shorter  
Back*



*Grommet detailing  
on right shoulder*

NIENA

*Look fierce  
and be  
comfortable  
in this  
sweater  
jersey dress*



*Grommet detailing on  
both shoulders and sleeves*



*Dress length just  
above the knee*

anna  hove**t**

F7104

# KATHY



*Contrast  
hood  
lining and  
foldover  
cuffs*



*Full length sleeves  
with grommet/twill  
tape detail to shorten*

*Twill tape drawstring through hood and  
grommets at waist to wear as wrap sweatshirt*



# HEATHER



*Dolman sleeves*



*Extra large hood/cowl*



*Twill tape Drawstring*

*Seamline detailing in front*

# JILLIAN

*Beautiful  
draped  
collar*

*Dolman  
sleeves*



*Twill tape  
waist belt*





# JASON



*One front pocket*



*Contrast hood lining*

*Asymmetrical zipper closure*

# TROY

*Ribbed collar*



*Contrasting ribbing and front pocket*

*Extra long ribbed cuffs at wrists*



*Elbow Patches*

**HOVET**  
MENSWEAR

**F7109M**

# Credits



Photographer  
**Rachel Hanel**

Models  
**Betina Gozo and Troy Pryor**

Make-up  
**Becky Hill**

Hair  
**Carol Wood**

Stylist  
**Xochitl Gomez**

**Wholesale Inquiries**  
Anna Hovet  
e || [anna@annahovet.com](mailto:anna@annahovet.com)  
p || 773.504.6054