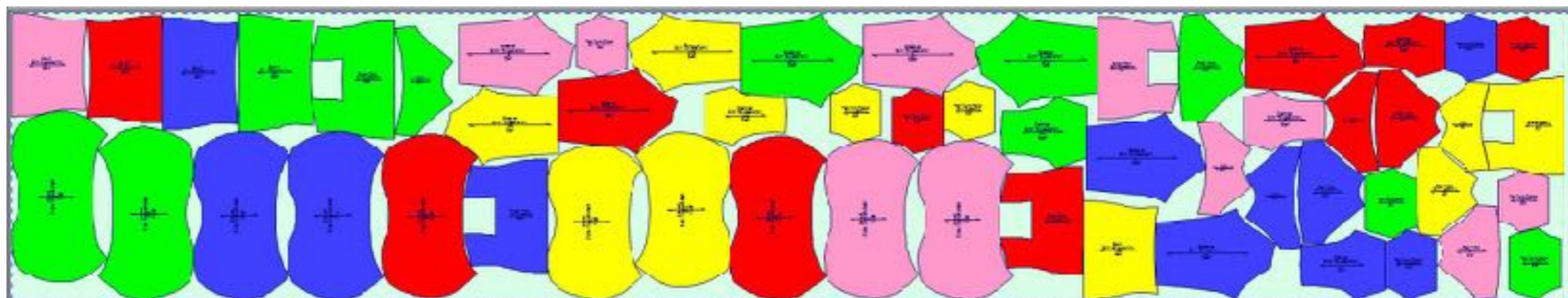
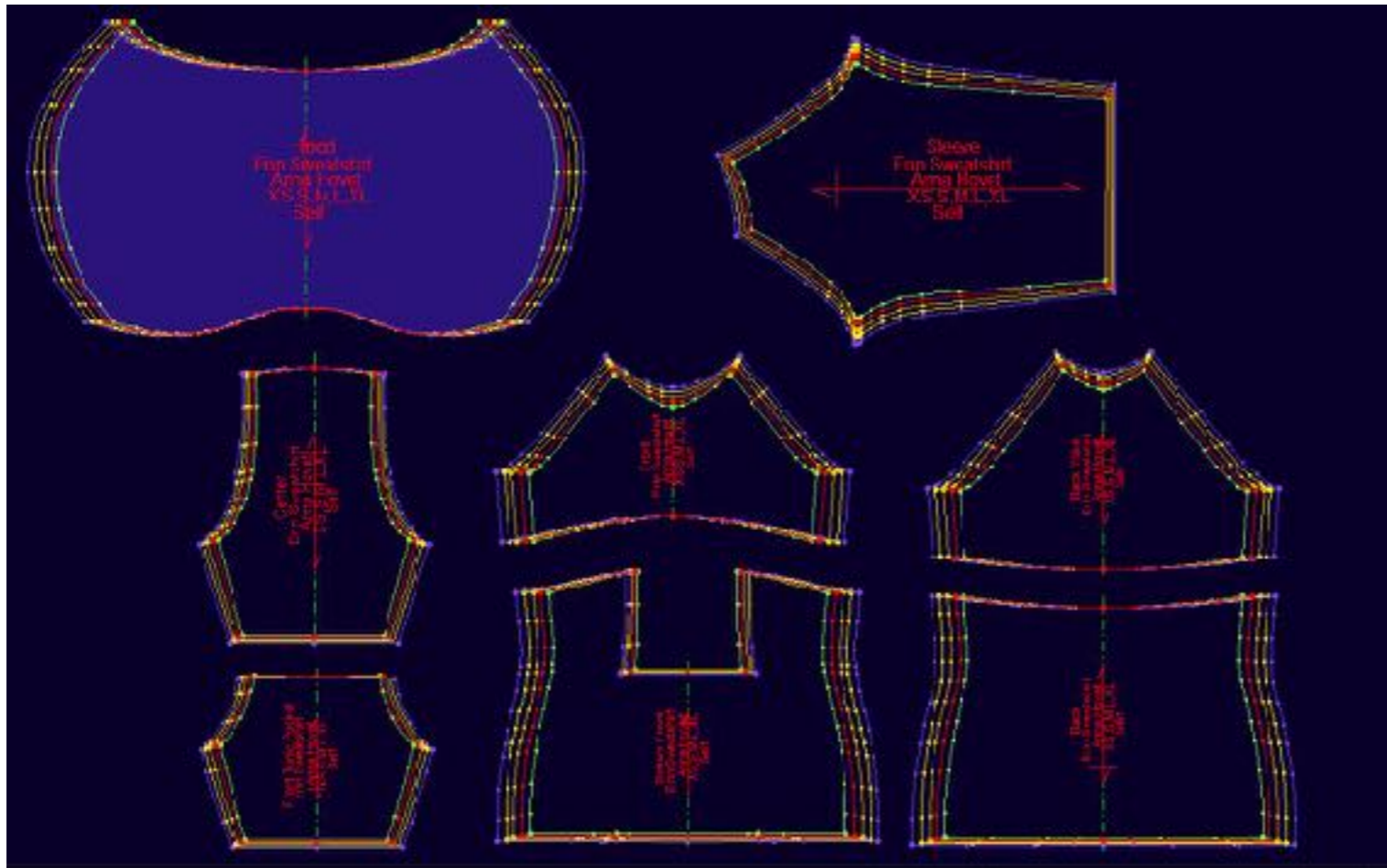


Anna Hovet Dias Pattern-making Portfolio

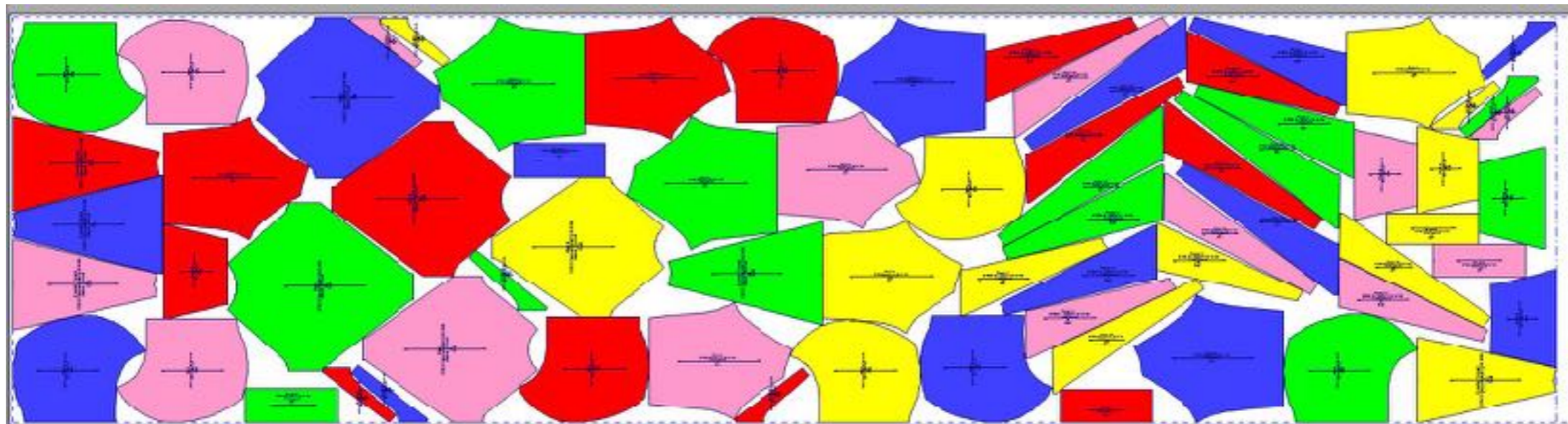
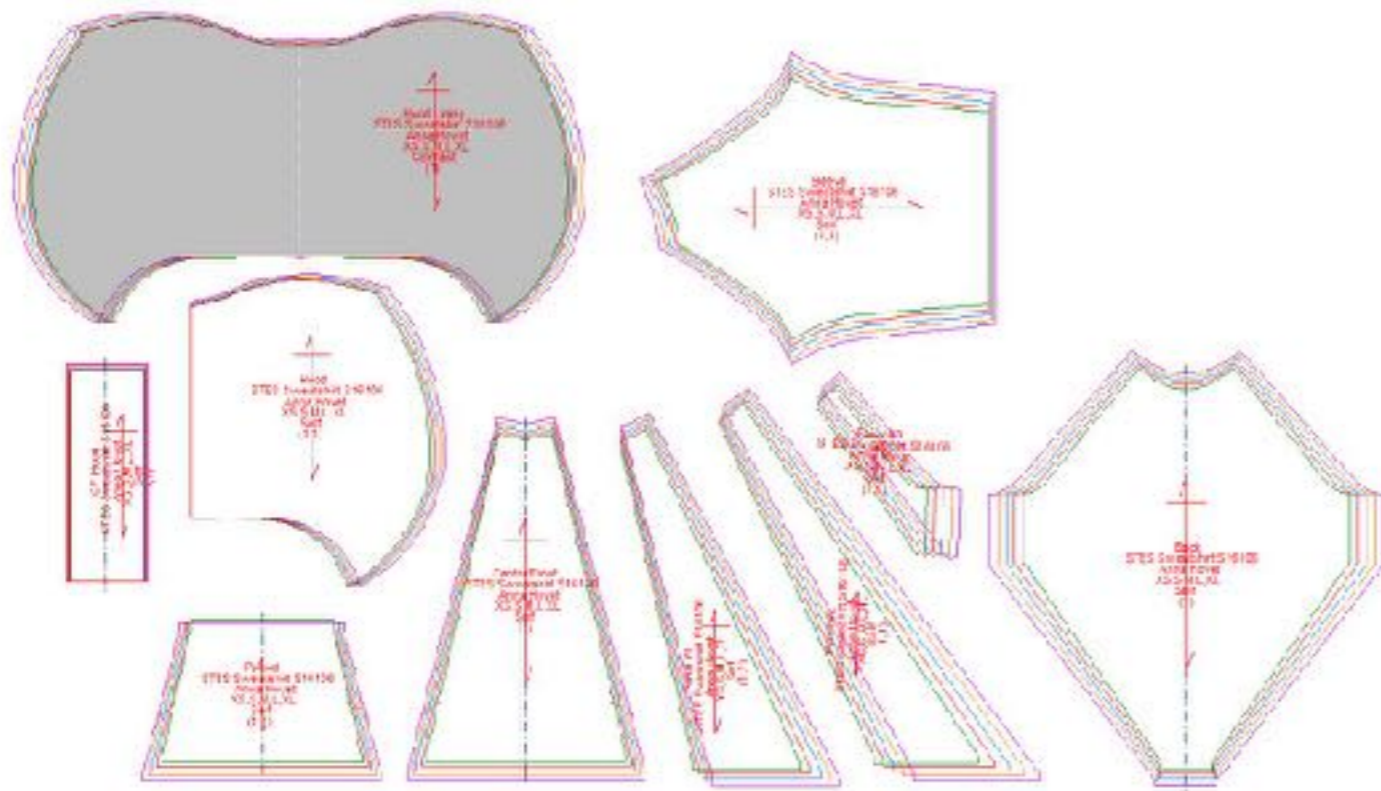
PATTERN-MAKING

Anna Hovet Dias personally crafted the patterns for every garment in the Anna Hovet collection. She initiated the process by draping fabric, which was then translated onto paper, preserving the soft fluidity of drape. Over several years, Anna manually graded sizes and puzzled markers using mathematical precision. However, in 2013, she transitioned to digitizing and grading patterns through software. Despite this shift, Anna continues to create initial patterns by hand before refining the digitized versions.

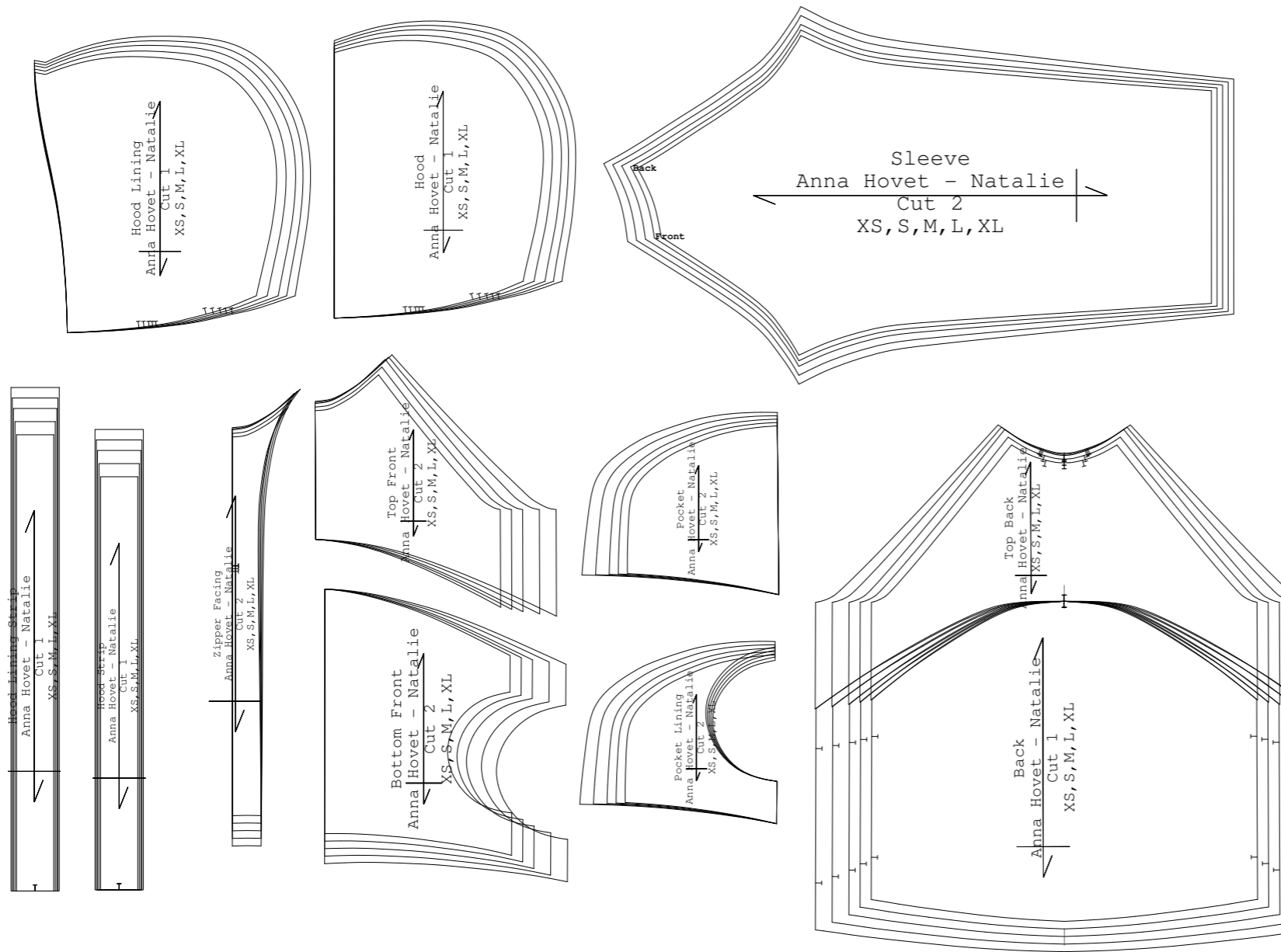




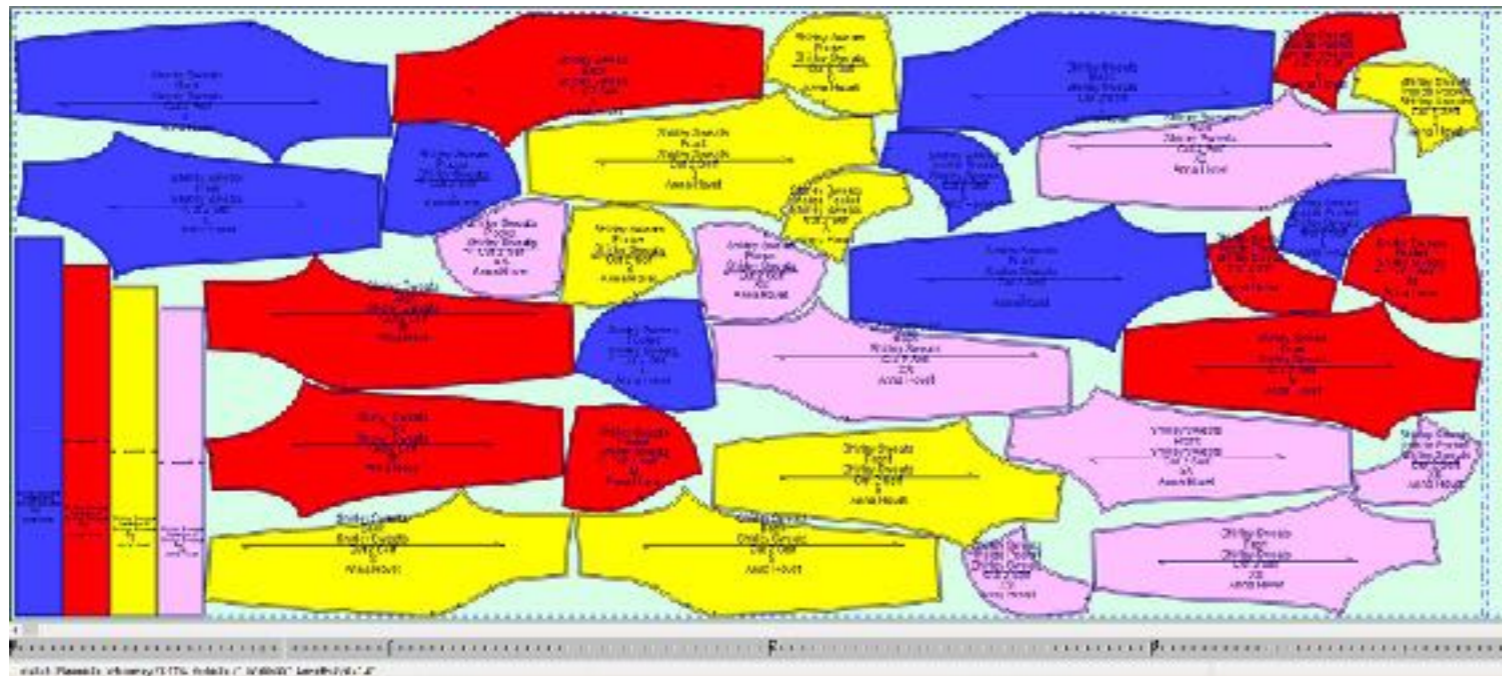
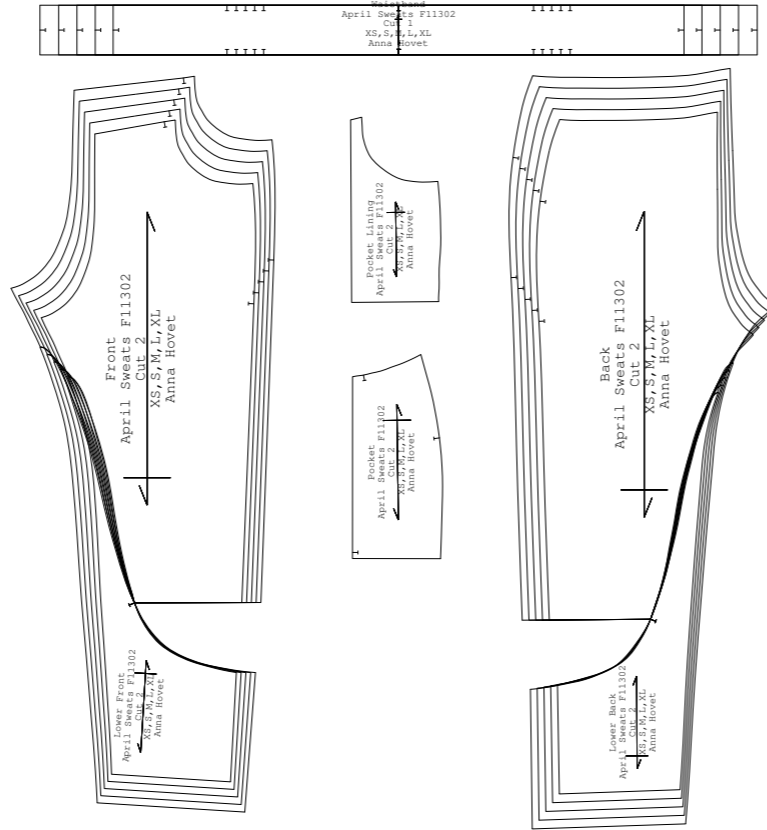
Erin Hooded Sweatshirt - Tunic length hoodie with interior front pocket, draped oversized hood and extra long sleeve cuffs



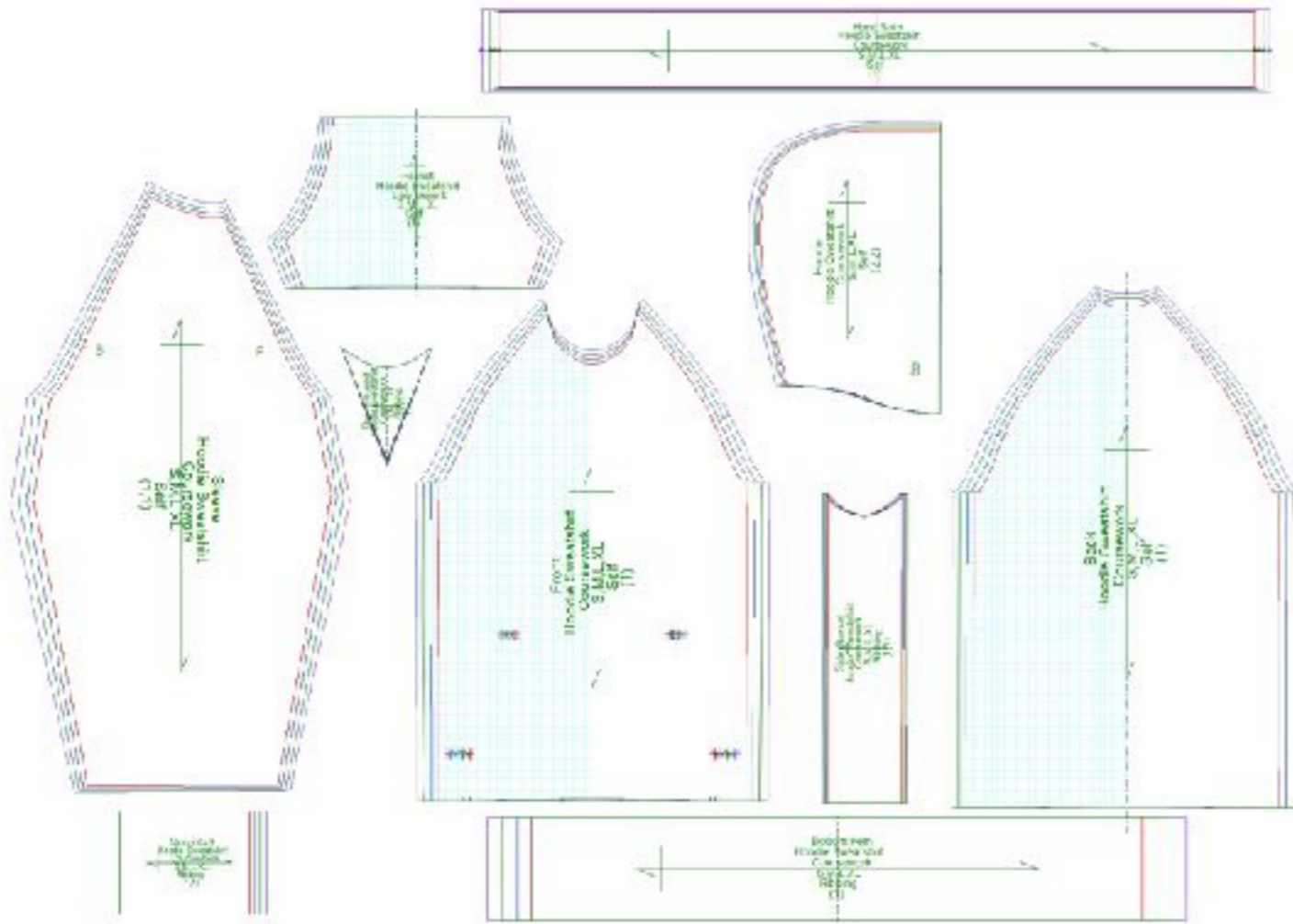
Stes Hooded Sweatshirt - Raglan sleeve top with front pocket, draped oversized hood and piped seaming.



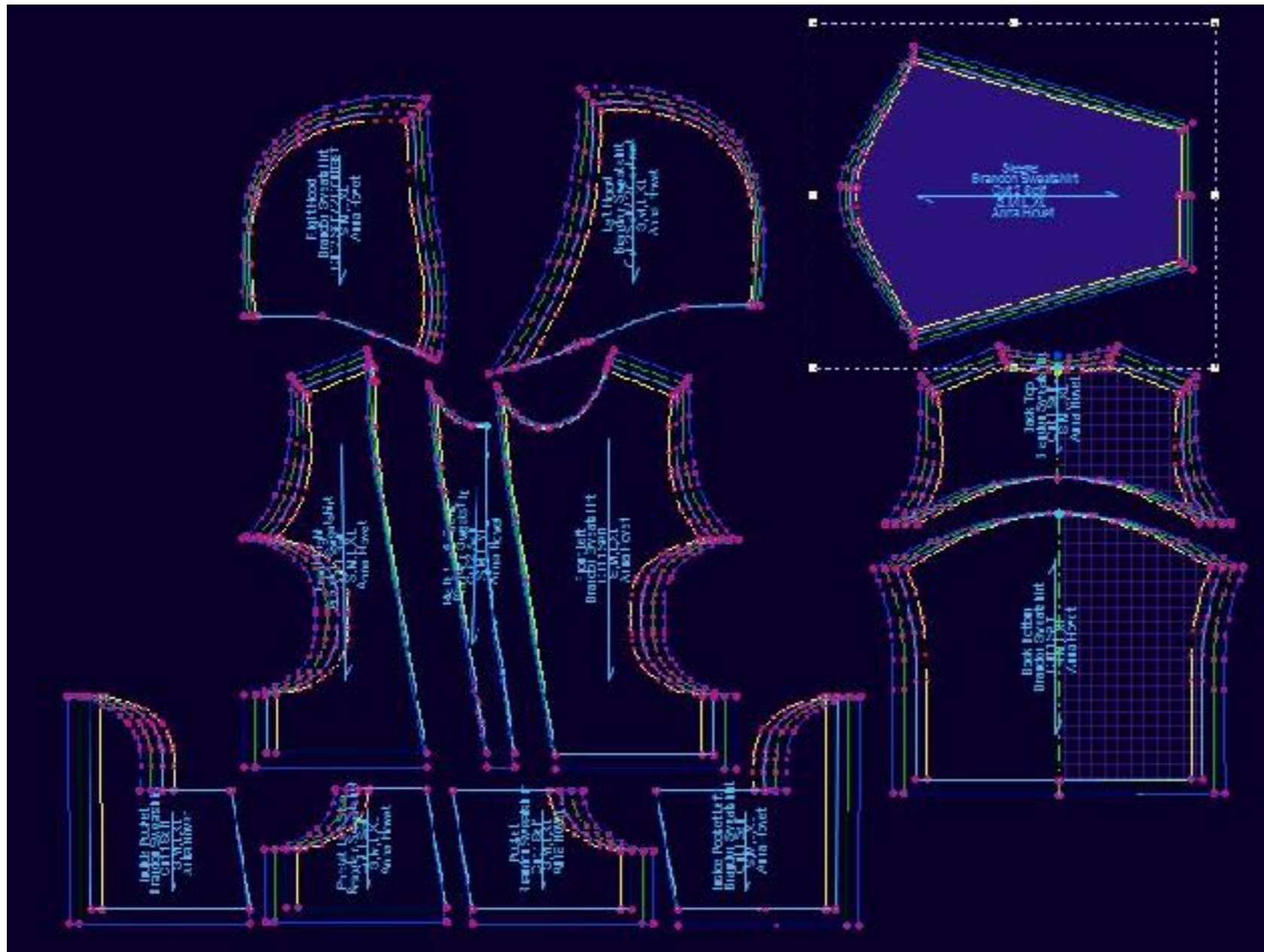
Natalie Zip-Up Sweatshirt - Zip up hoodie with front pocket, color blocking, and high-low asymmetry.



April Sweatpants + Shirley Sweatpants - color blocked joggers with drawstring waistband



Coursework Sweatshirt - Men's crew neck sweatshirt with underarm gussets



Brandon Sweatshirt - Asymmetrical zip-up mens sweatshirt